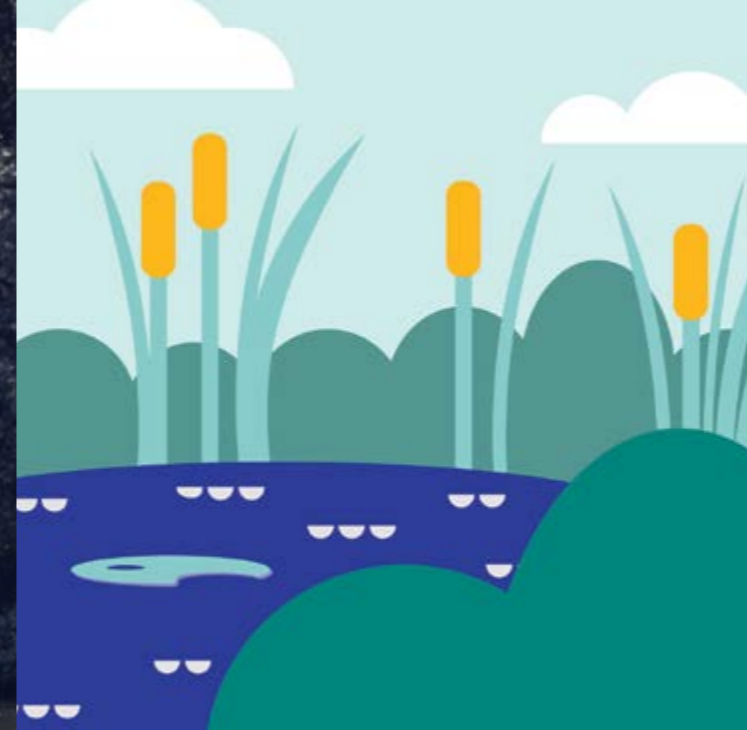


# Nature-based Solutions



Waterbeach has been highlighted by both the Institute of Civil Engineers and by Lloyds Sustainability Programme, for the innovative design and delivery work in taking a nature-based solution to water management throughout the development.

The approach has evolved from a more engineering-led approach at Alconbury Weald, to truly embedding the water strategy into the wider green and biodiversity strategies. This has been done by raising the levels across significant areas of the site to enable gravity-led systems, which work with both existing and new swales, streams and ponds, alongside the development's 23 acre lake. The approach not only provides 19 million litres of water capacity within the first phase of development, but also ensures the space for water also acts as new wetland marginal habitats for nature, and is designed into the nature trails and green routes for residents as part of the active communities approach.

The approach became a feature of an ICE conference in 2024, and then garnered interest for a BBC feature on water within new developments, and their role in supporting climate resilience in Cambridgeshire. The innovative approach has also been picked up by Lloyds Bank, whose sustainability programme seeks to support businesses and investors to support better sustainable outcomes through their businesses. The development featured in a video run at an exclusive event at COP 26 in October.

