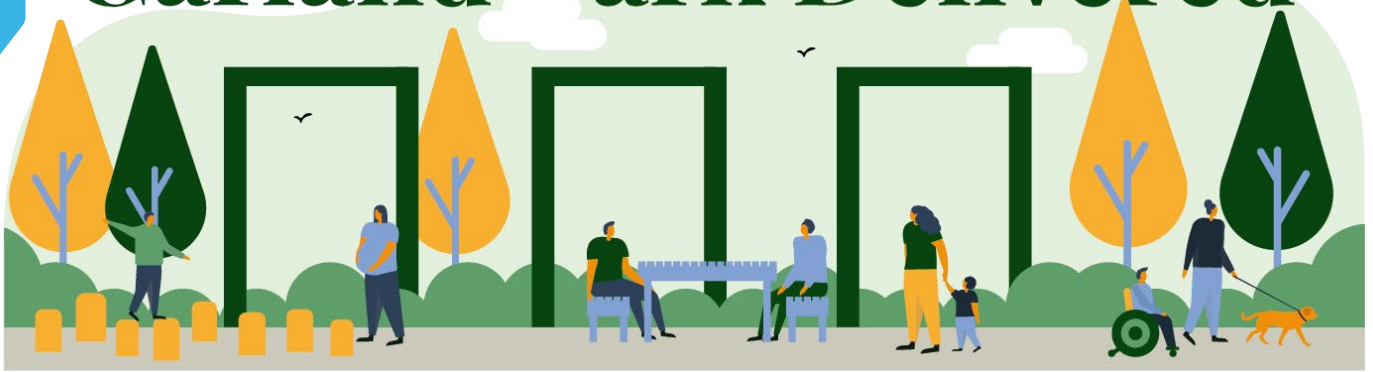


Garland Park Delivered



Garland Park unites heritage, landscape and play

Garland Park is a multi-functional green space that runs along the route of one of the airfield's former taxiways, with a walking and cycling route connecting Ermine Street Church Academy to The Glade local centre.

The Park, which is being delivered in phases, will include informal recreational spaces, a range of play opportunities from wild play and open spaces to equipped play areas, seating and picnic benches, community orchards, hedgerows, avenue of trees, wildflowers and other ecological features.

Phase 1 and 2 of Garland Park have been completed with residents enjoying play equipment and table tennis tables, a community orchard, and landscaped areas for relaxing and play along the way together with a number of information boards which detail the site's rich history.

Work has started on the final phase, which is due to be completed in 2025.



Quality



Natural

