

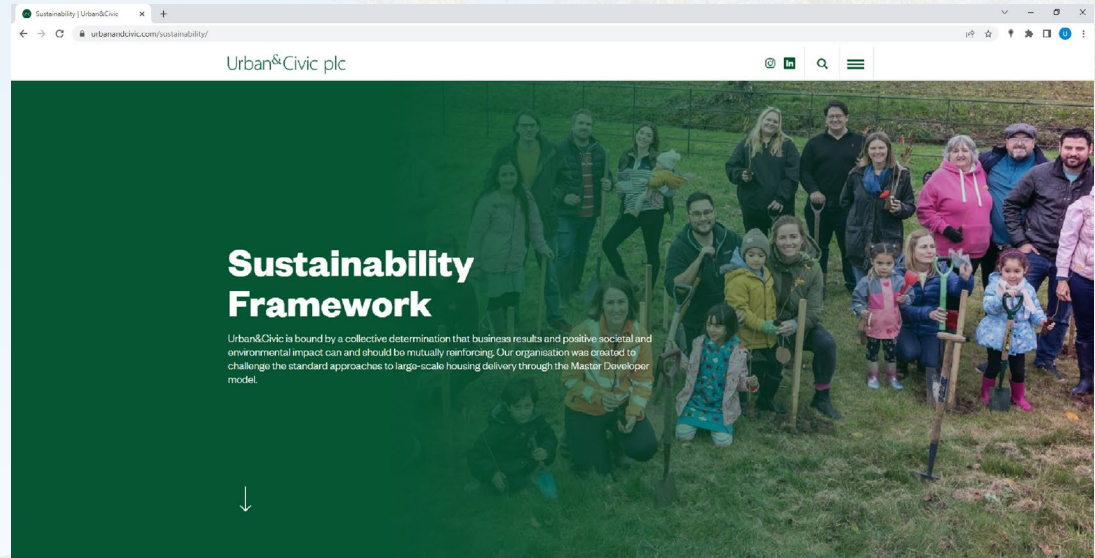
Our Sustainability Framework

June 2022

Urban & Civic



Interactive & Online



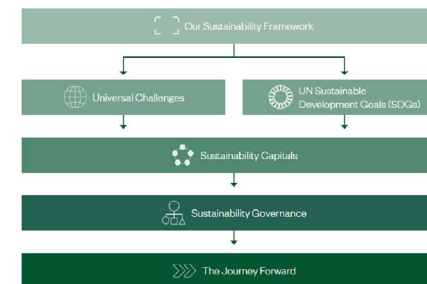
Introduction

As the number of projects under our stewardship continues to expand, we have formalised our approach to sustainability. Every year, our intention is to drive ambition and ensure consistency across our operations. We are committed to building modern communities whilst minimising our carbon impact, enhancing biodiversity and facilitating health and wellbeing across all our sites. We also endeavour to foster sustainable local employment and business opportunities in the areas where we operate.

Sustainability Framework

Our Sustainability Framework formalises our commitment to sustainable business practices and continuous environmental and social improvements across our portfolio. It provides a set of minimum standards across the whole of Urban&Civic and sets out our long term ambition to achieve sustainable excellence.

An initial five-year horizon with targets in 2025 has been set for the strategic formalised evaluation of our performance.



The Framework is a living document which works to support our longer-term needs and drivers of national significance so is likely to change and be updated over time. The latest version of our Sustainability Framework can be downloaded here.

[SUSTAINABILITY FRAMEWORK](#)

Urban&Civic plc @ i q ☰

Sustainability capitals

[Intro content]

Physical

The Physical capital relates to the community and commercial buildings as well as green, grey and blue infrastructure that we retain and manage.

READ MORE

Social

The Social capital relates to the networks of relationships amongst people and the role of placemaking in the integration of our communities.

READ MORE

Economic

The Economic capital relates to the long-term viability of our organisation and the Strategic Sites we retain and operate.

Urban&Civic plc @ i q ☰

Carbon footprint

Overview

Carbon reduction has been a consistent measure for our business, focusing on operational carbon from the space we own or occupy as well as from our own direct activities. It represents the part of our carbon footprint over which we have absolute control and which we have full responsibility.

Resilience

However, our operational Scope 1 and 2 emissions will only account for 4% of our business as usual carbon footprint over the years 2020-2035 with the remaining 96% being Scope 3 emissions resulting directly and indirectly from infrastructure and buildings commissioned by Urban&Civic.

Connectivity

Our full 2023 performance is set out here

ANNUAL REPORT 2023

Our 2025 targets will put us well on the path to achieving our net zero commitments.

- net zero by 2050 for Scope 1 and 2 emissions, by keeping cumulative absolute emissions well within the carbon budget for the 1.5-degree scenario of Science Based Targets (SBTi).
- net zero by 2040 for Scope 3 emissions resulting directly and indirectly from infrastructure and buildings commissioned by Urban&Civic. Cumulative absolute Scope 3 emissions to remain within the carbon budget for the Well-being 2-degree with an aspiration to stay within the 1.5-degree scenario of Science Based Targets (SBTi).

Targets

2025 targets

- Achieve an annual reduction of 7% in absolute Scope 1 and 2 emissions as per GECOR reporting (tonnes CO2e). This equates to a 30 per cent reduction compared to 2020/2021 data.
- Achieve an annual reduction of 2.5% minimum, thereby complying with the "best below" 2°C scenario (with a view to achieving 4.2% in line with the GPC scenario) in absolute Scope 3 emissions encompassing whole life-cycle operational carbon for all directly sponsored infrastructure and buildings delivered in the year (tonnes CO2e). This equates to a 43% reduction compared to 2020/2021 data.
- Develop a complete inventory for all Scope 3 emissions for the year 2022/2023 to establish the actual Scope 3 footprint across all the work of Urban&Civic.

Performance

Although our operational carbon emissions reduction was lower than our target in 2023/24, it shows we are on the right path to making substantial reductions by 2025.

93%

74%

■ Target

■ Actual

Graph showing the target reduction and actual reduction in operational carbon emissions per sq m of occupied asset for the FY 2023/24.

Urban&Civic

The UK's leading Master Developer and the Wellcome Trust



14 sites: 7 in delivery

- | | | | | | |
|------------------------------------|--------------------------------|--------------------------------|-------------------------------------|------------------------------------|-------------------------------|
| Alconbury Weald | Radio Station Rugby | Middlebeck Newark | Priors Hall Northamptonshire | WINTRINGHAM ST NEOTS | Waterbeach Barracks |
| Baldock North Hertfordshire | Bowmans Cross Hertsmere | Calvert Buckinghamshire | Hinxton Cambridgeshire | Kings Langley Hertfordshire | MANYDOWN EASTSUSSEX |
| | | | | Stoughton Leicestershire | Tempsford Bedfordshire |

11 partners



18 stakeholders

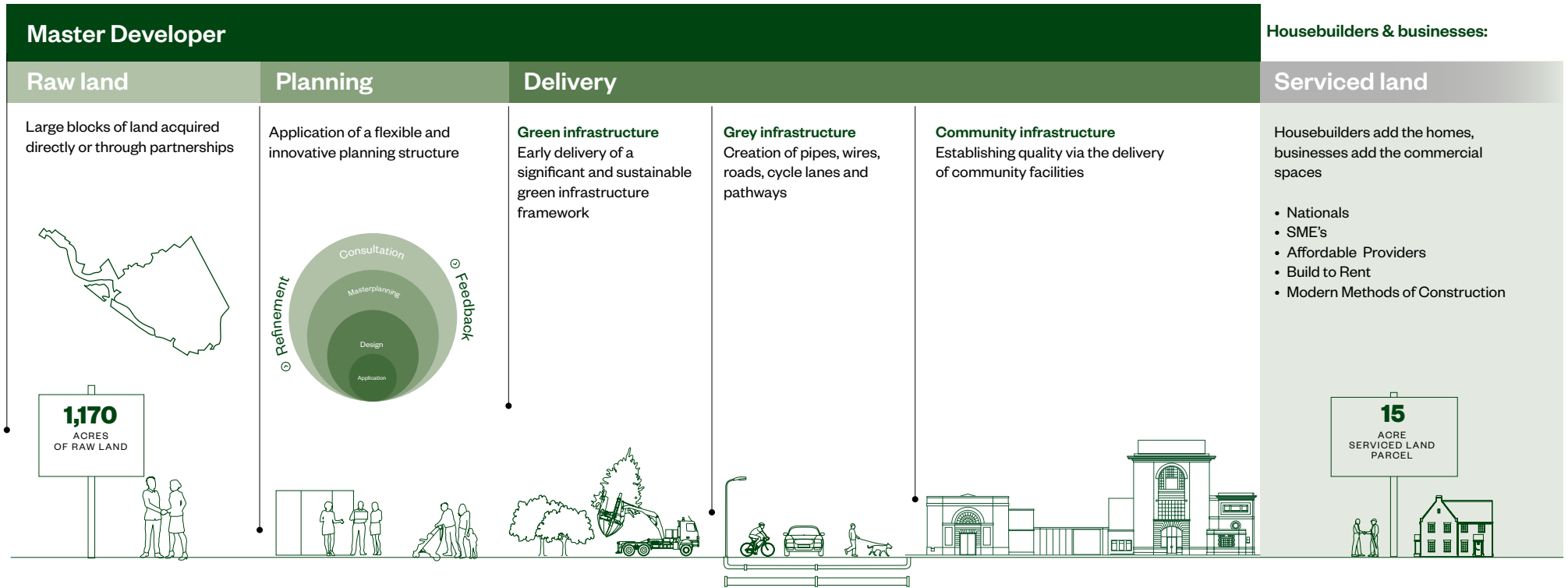


23 housebuilding customers



Master Developer - Business Model

Sustainably infrastructure led



Underpinned by our:

Values



Quality



Integrity



Passion



Partnership



Innovation

Sustainability capitals



Physical



Social



Economic



Natural



Human

Land

£

££££

Cash

Urban&Civic - Getting on with things

But it's more than just homes



35,500
consented and
submitted homes



28km
of cycleways



10m ft²
employment
floor space



19
primary Schools



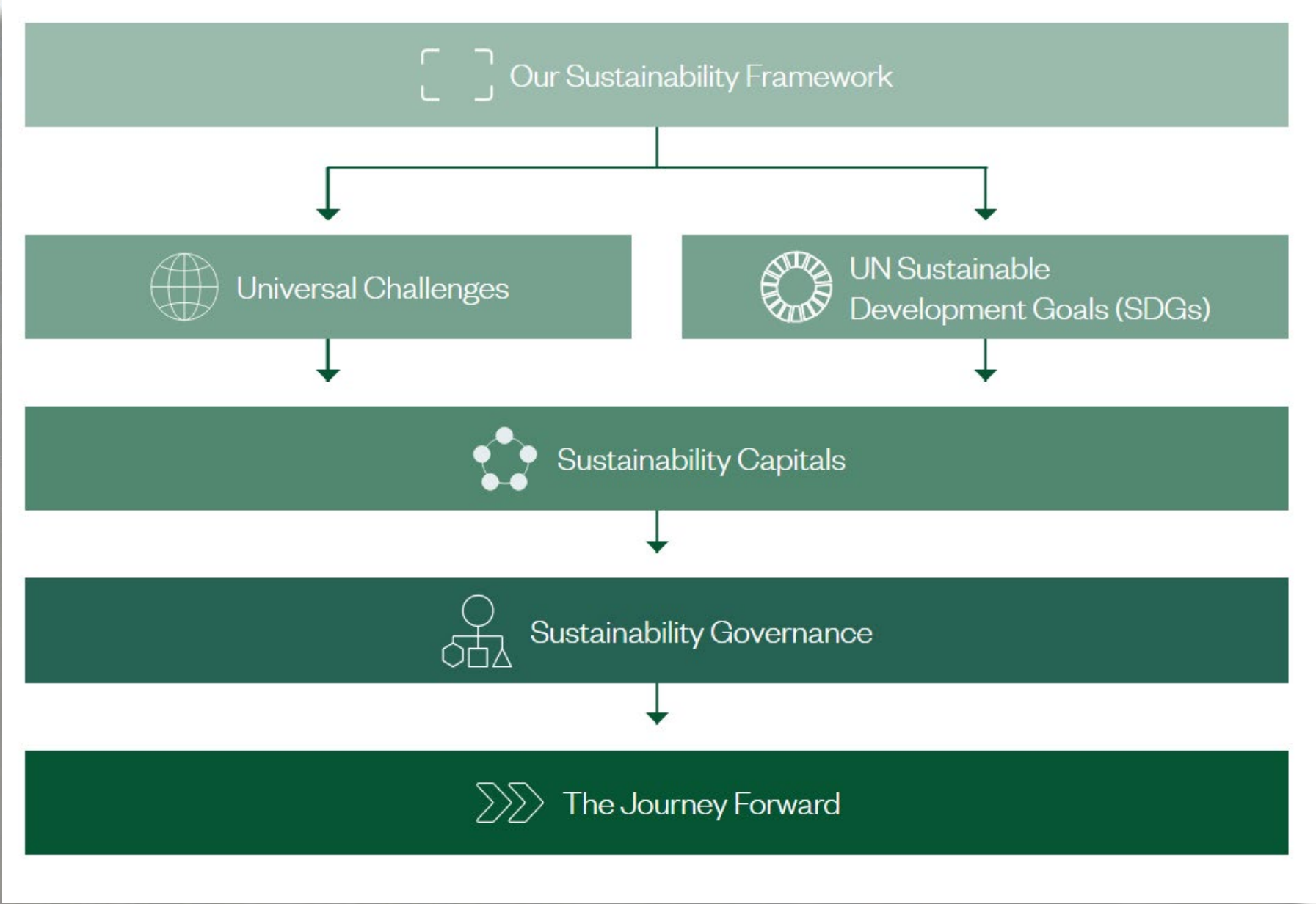
5
secondary schools



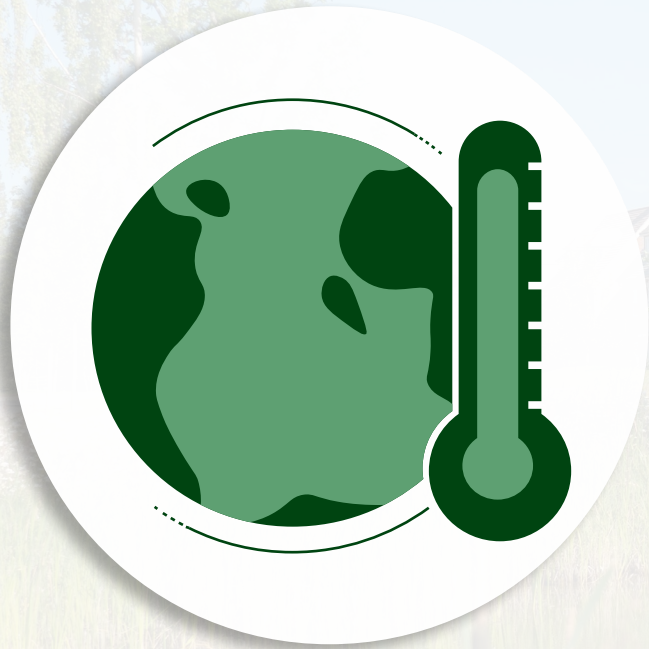
2,000+
acres of open
space



Our approach to Sustainability



Universal Challenges



Climate Change



Biodiversity



Health & Wellbeing

Sustainable Development Goals

Our key SDGs

PRIMARY



Sustainable cities and communities

SUPPLEMENTARY



Quality education



Affordable and clean energy



Decent work and economic growth



Industry, innovation and infrastructure



Reduced inequalities



Responsible consumption and production



Climate action



Life on land

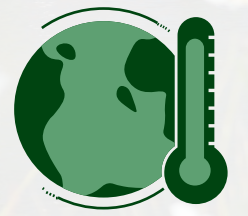


Science Based Targets Initiative



2024

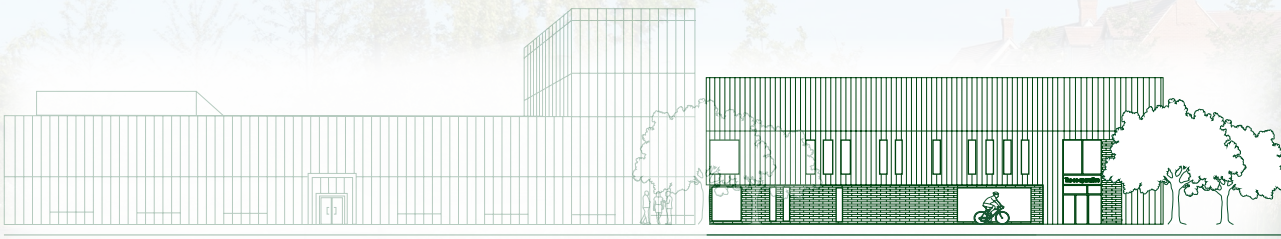
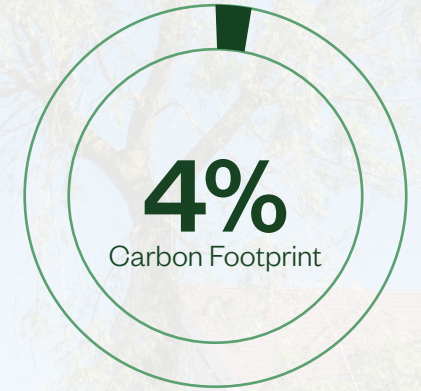
Commitment to science based target initiative





Carbon - U&C controlled emissions

Net Zero by 2030

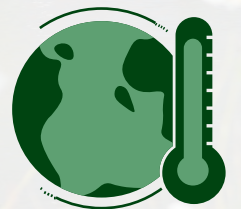


2024

Commitment to science based target initiative

2030

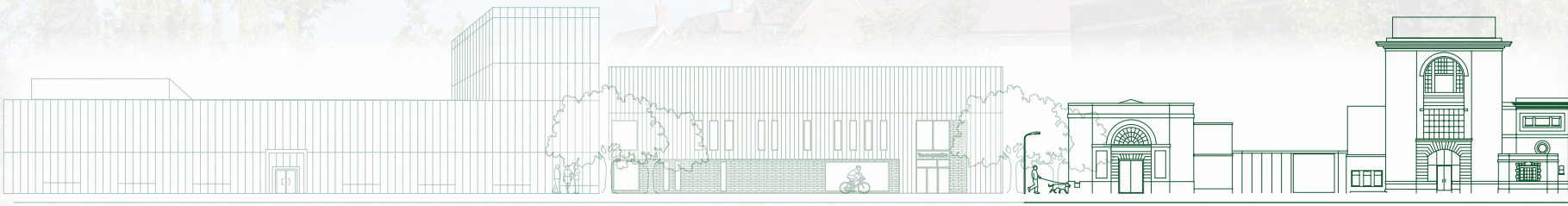
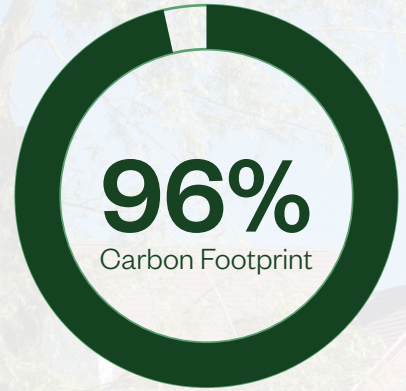
Emissions from U&C controlled sources such as buildings, facilities and vehicles (scopes 1 and 2)





Carbon - U&C 'value chain' emissions

Net Zero by 2040



2024

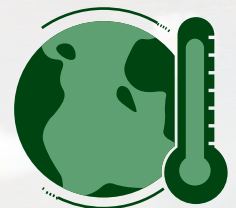
Commitment to science based target initiative

2030

Emissions from U&C controlled sources such as buildings, facilities and vehicles (scopes 1 and 2)

2040

Indirect emissions in the U&C value chain such as embodied carbon in buildings and infrastructure built by U&C and operational energy used by others (scope 3)



Carbon - House Builders



2024

Commitment to science based target initiative

2030

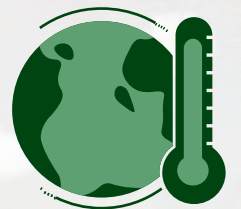
Emissions from U&C controlled sources such as buildings, facilities and vehicles (scopes 1 and 2)

2040

Indirect emissions in the U&C value chain such as embodied carbon in buildings and infrastructure built by U&C and operational energy used by others (scope 3)

Excluded

House builder embodied carbon and resident emissions





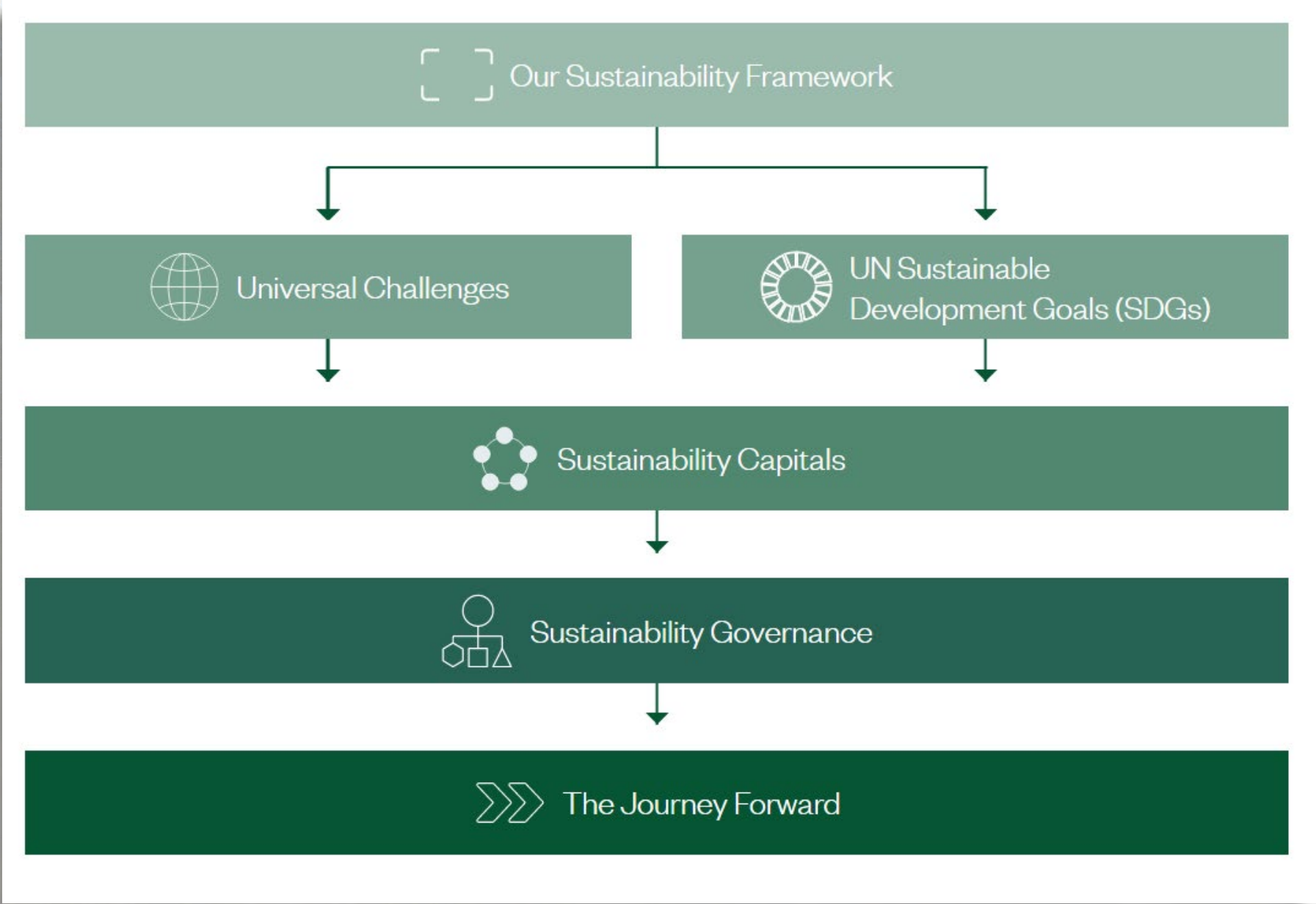
Biodiversity - A Minimum of 12% Biodiversity Net Gain



Health and Wellbeing



Our approach to Sustainability

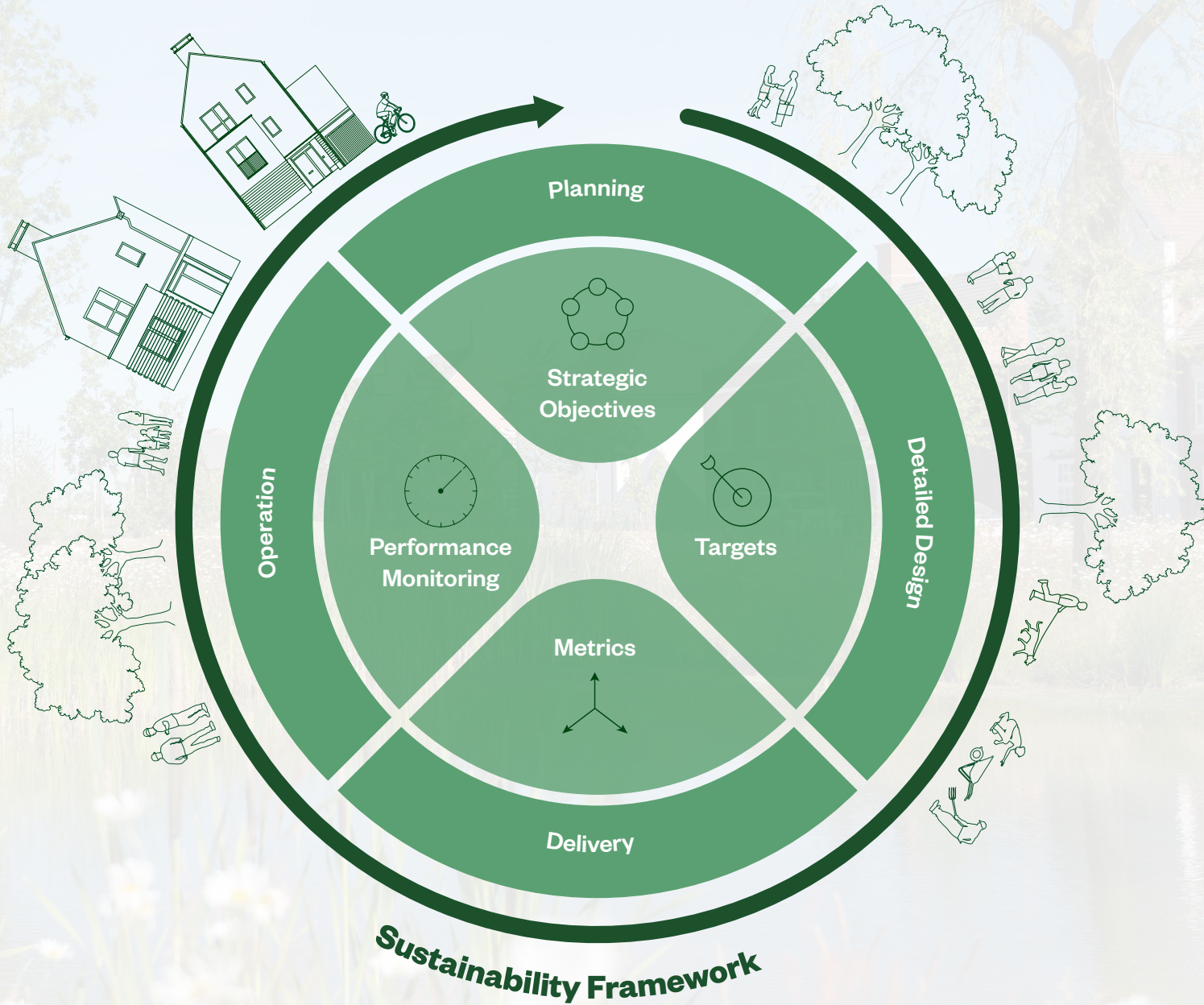




Capitals Model



Embedded in everything we do...



Sustainability Toolkits



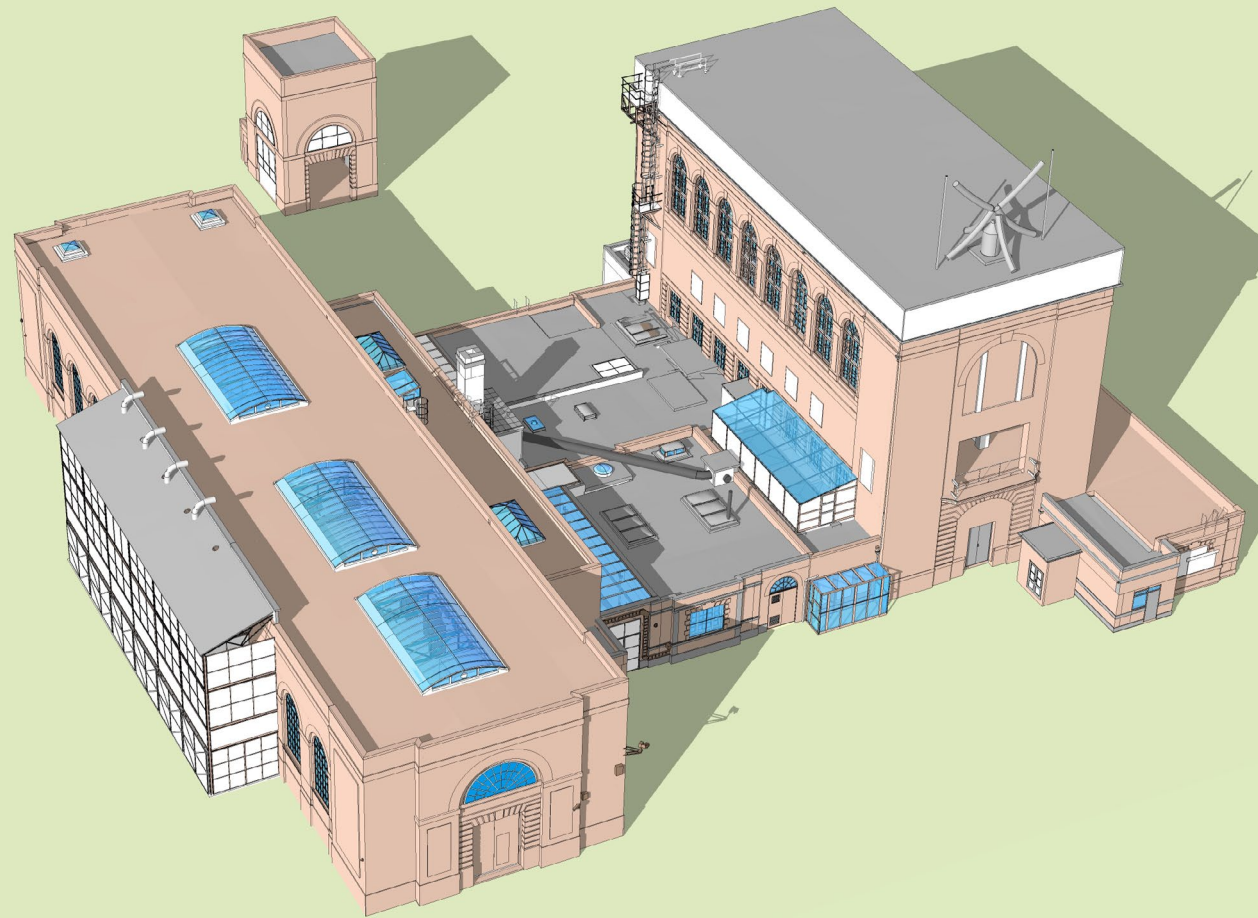
Houlton - Delivering Sustainability



Houlton Schools



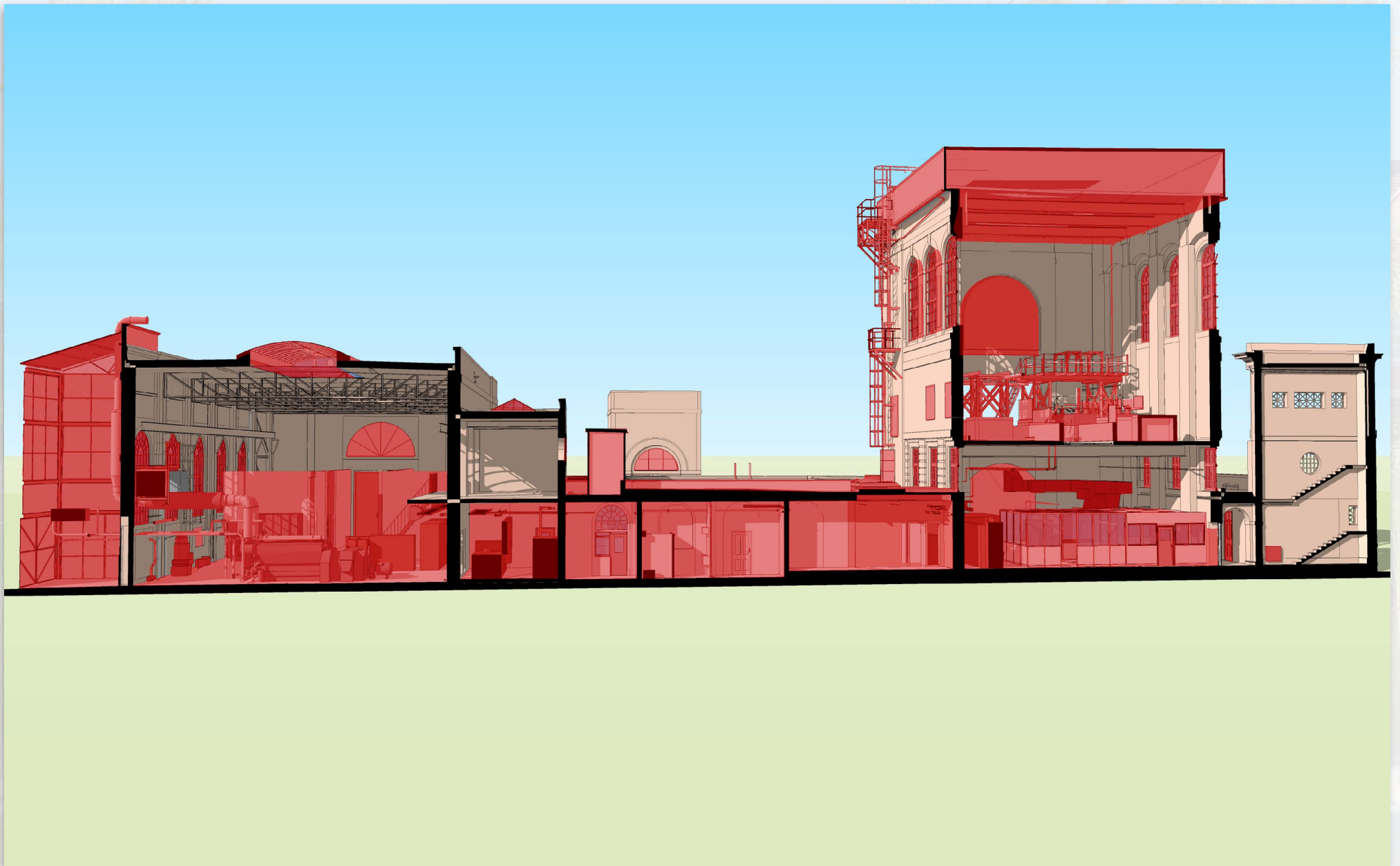
The Grade II Listed C-Station Building



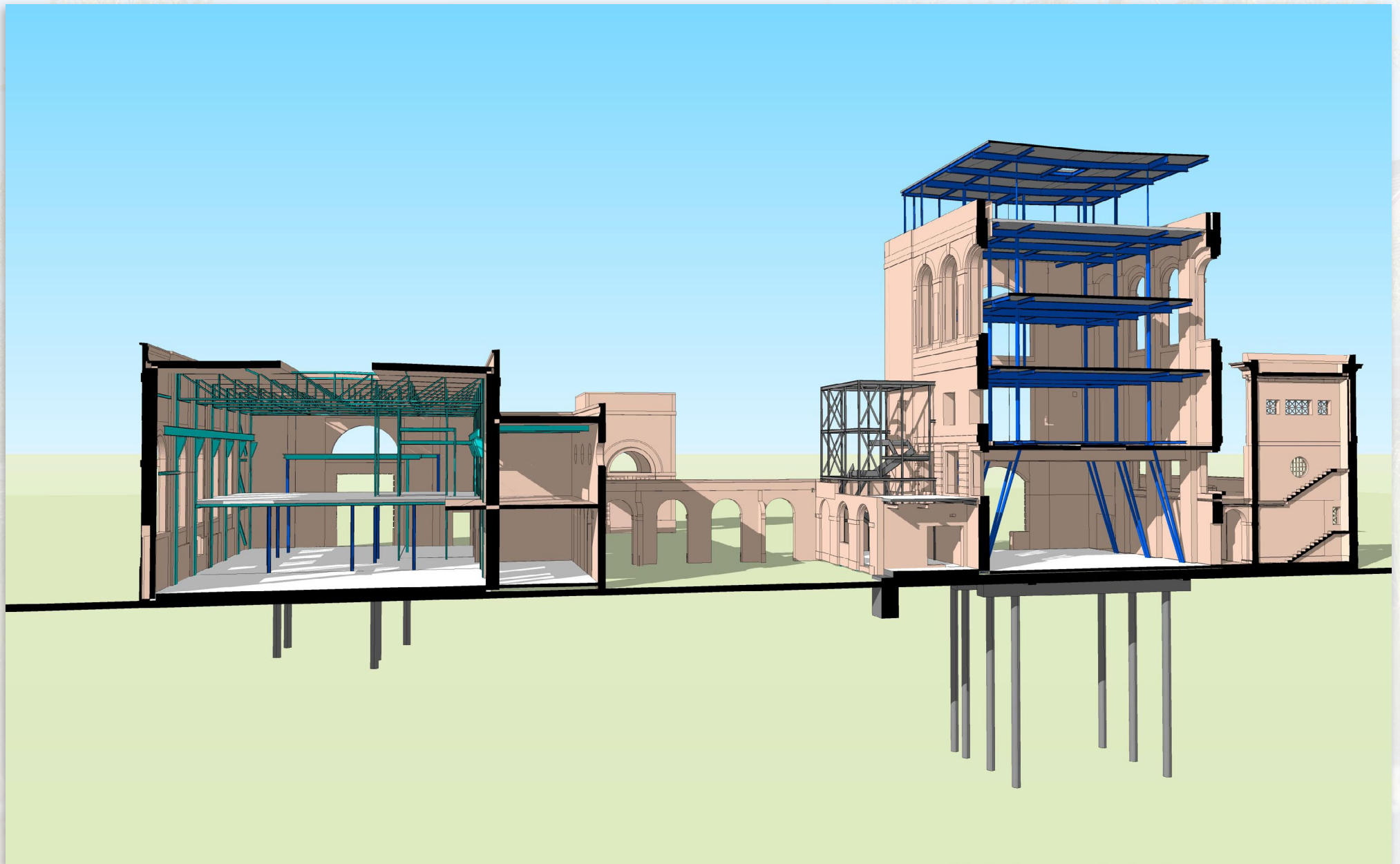
A complex labyrinth of small spaces between vast halls



Finding the historic equipment a good home



Creating a new structure within a structure



Adding to and updating the buildings for their new roles



Historic buildings given another chance



St Gabriel's CofE Academy



Houlton - Infrastructure



Footpaths
20% lower CO2
emissions



Recycled material
15,000m3
of material
crushed and
reused in haul
roads



Cycle Paths
16km of foot
and cycleways
delivered

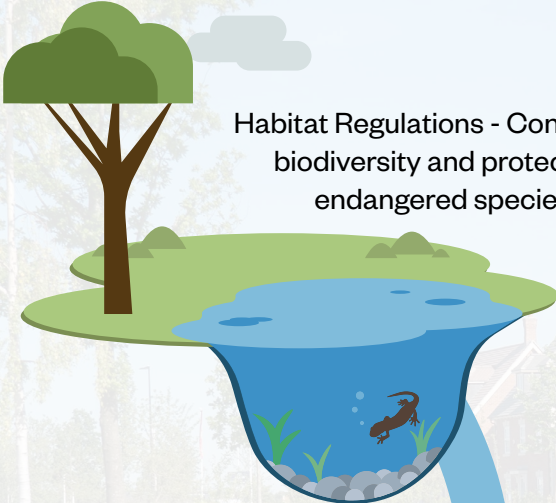
Houlton - CivicLiving



26% Lower carbon homes

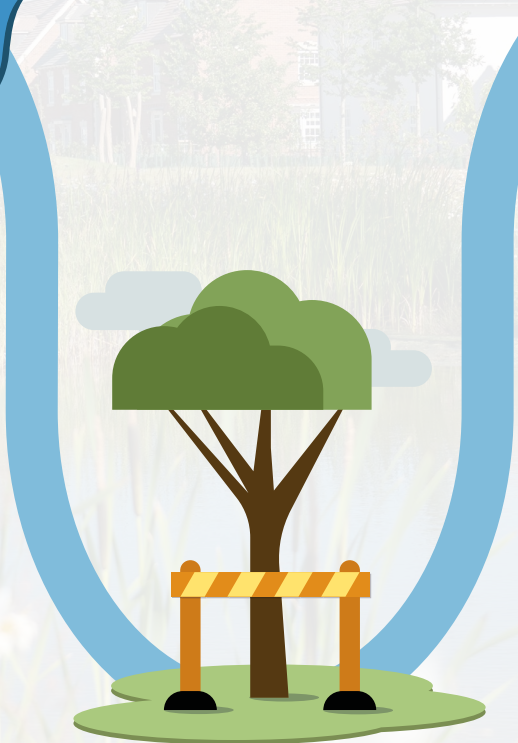
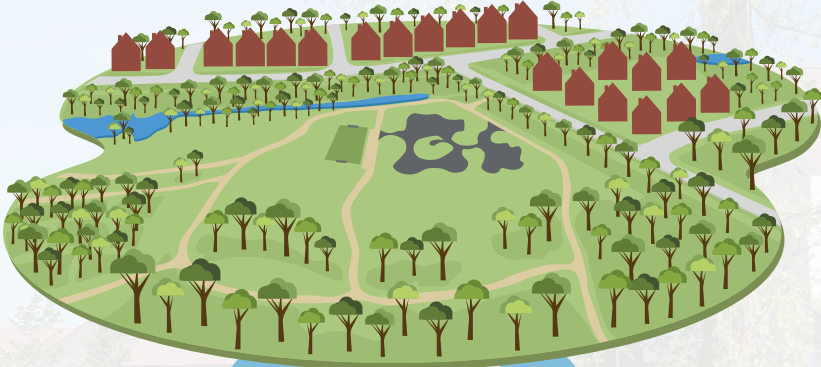


Houlton - From Newts to Net Gain

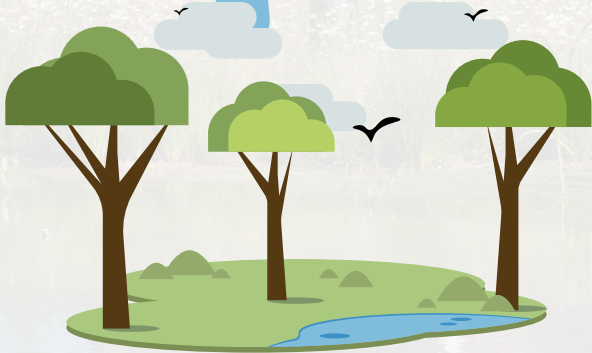


Habitat Regulations - Conserving biodiversity and protecting endangered species

Environment Act 2021 - Introduced biodiversity net gain requirement in planning

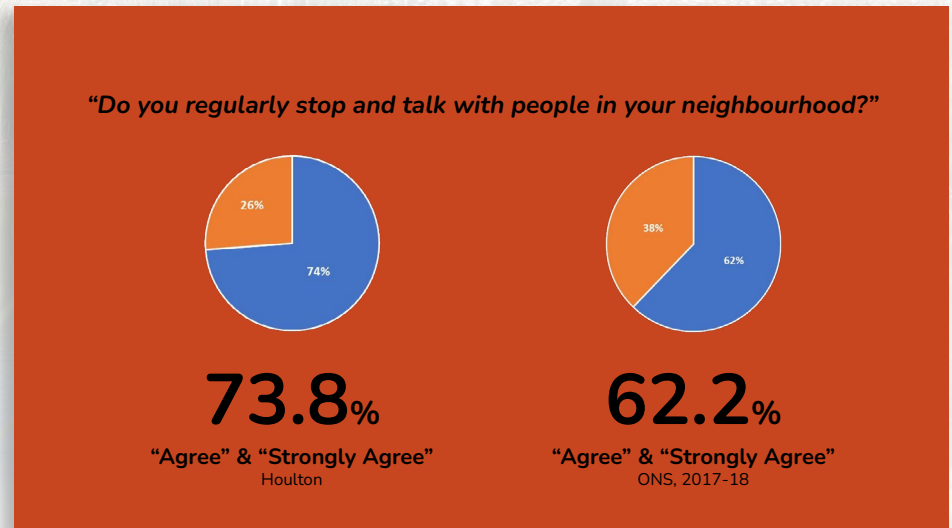
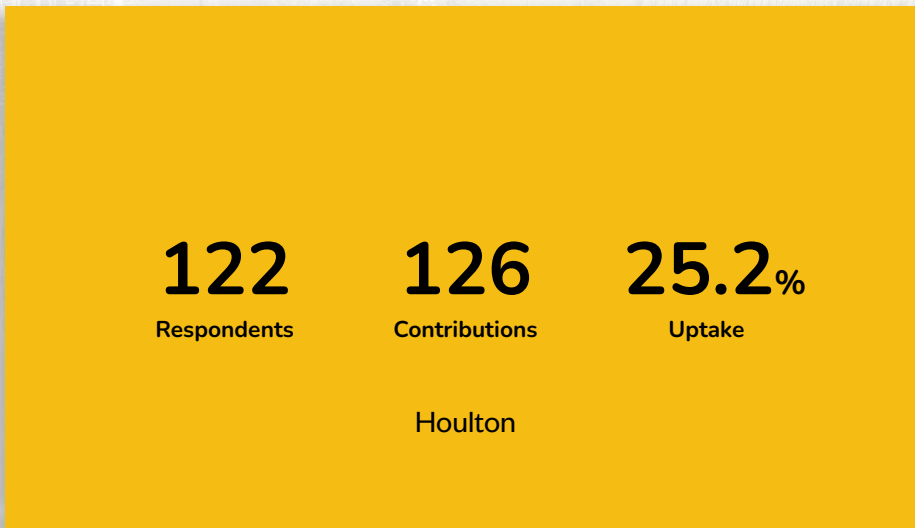
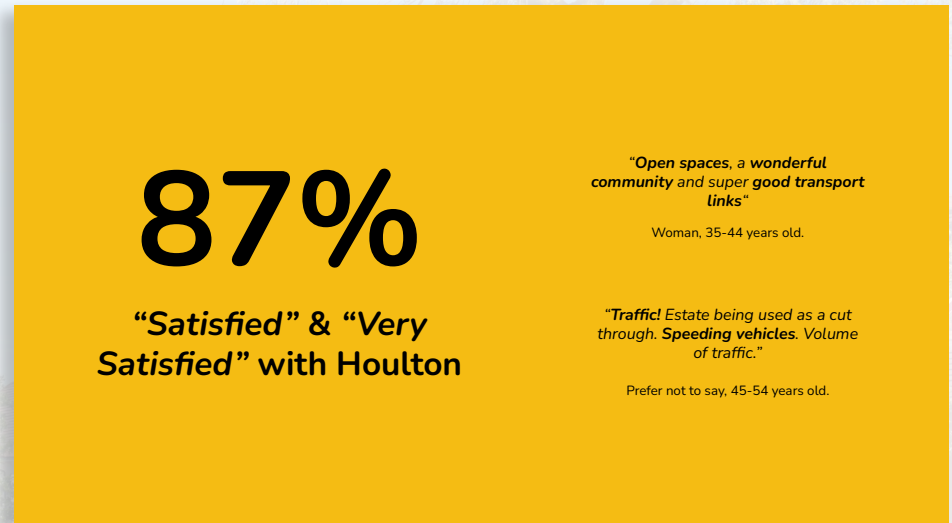


National Planning Policy Framework - conserving and enhancing the natural environment



Implementation expected: 2023 Mandatory minimum 10% BNG

Houlton - Quality of Life



Houlton - Health & Fitness



Houlton - Trees planted



#houltonnature - Education on sustainability



A typical day in the life of a Houlton family



1



We leave home at 8.30am to walk to school

2



Mummy gets a coffee from the Café at Dollman Farm

3



Pick up essentials at local Co-op

4



We play on the way to school



5



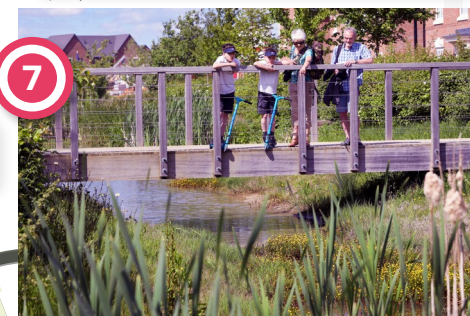
We get to school at 8.45am

6



We play some more at school

7



At 3.15pm, we walk home through the wildlife corridors

8



We have lots of fun on the big play area before home

Questions

Urban & Civic

