

SatNav PE28 4XA



Urban&Civic

The Club, The Boulevard
Alconbury Enterprise Campus
Alconbury Weald, Huntingdon
Cambridgeshire PE28 4XA

T: 01480 413 141
alconbury-campus.co.uk

For further information or a discussion
about the units, please contact:

Barker Storey Matthews

Alan Matthews Richard Adam
arm@bsm.uk.com rha@bsm.uk.com

Savills

William Rose Phil Ridoutt
wrose@savills.com pridot@savills.com

BARKER STOREY MATTHEWS
01480 451578
bsm.uk.com

savills.co.uk
savills
01223 347 000
01733 344 414



Urban&Civic give notice that:

- 1 These particulars do not form part of any offer or contract and must not be relied upon as statements or representations of fact.
- 2 Any areas, measurements or distances are approximate and subject to final measurement. The text, photographs and plans are for guidance only and are not necessarily comprehensive. It should not be assumed that the property has all the necessary planning, building regulation or other consents and Urban&Civic have not tested any services, equipment or facilities. Purchasers must satisfy themselves by inspection or otherwise. Figures quoted in these particulars may be subject to VAT in addition | April 2018



**Alconbury
Enterprise
Campus**

OFFICE

**Alconbury
Weald
Make|Grow**

Incubator 2

Alconbury Enterprise Campus



Only two units left

- High spec offices
- Well connected location
- Sizes from 350 sq m to 700 sq m (3,770 sq ft to 7,540 sq ft)
- Available from Summer 2018

alconbury-campus.co.uk

Incubator 2 is the latest addition to the growing office community of Alconbury Enterprise Campus – the gateway to Alconbury Weald. It will provide flexible space from 350 sq m to 700 sq m (3,770 sq ft to 7,540 sq ft) and include:

- Dynamic, open spaces.
- Intimate working hubs.
- Range of shared facilities.



Sustainability

The building has been designed with a strong sustainability focus and the efficient use of resources such as water and energy will be ensured through a variety of methods including natural ventilation, a solar shading canopy and photovoltaic panels.

In addition, links to pedestrian and cycle routes, a covered cycle store, investment in public transport and a Green Travel Plan will provide a variety of sustainable transport options for your business and workforce.

travelalconburyweald.co.uk



The building will sit beside and complement the award-winning Incubator and The Club as a suite of striking buildings along the Boulevard entrance to Alconbury Enterprise Campus.

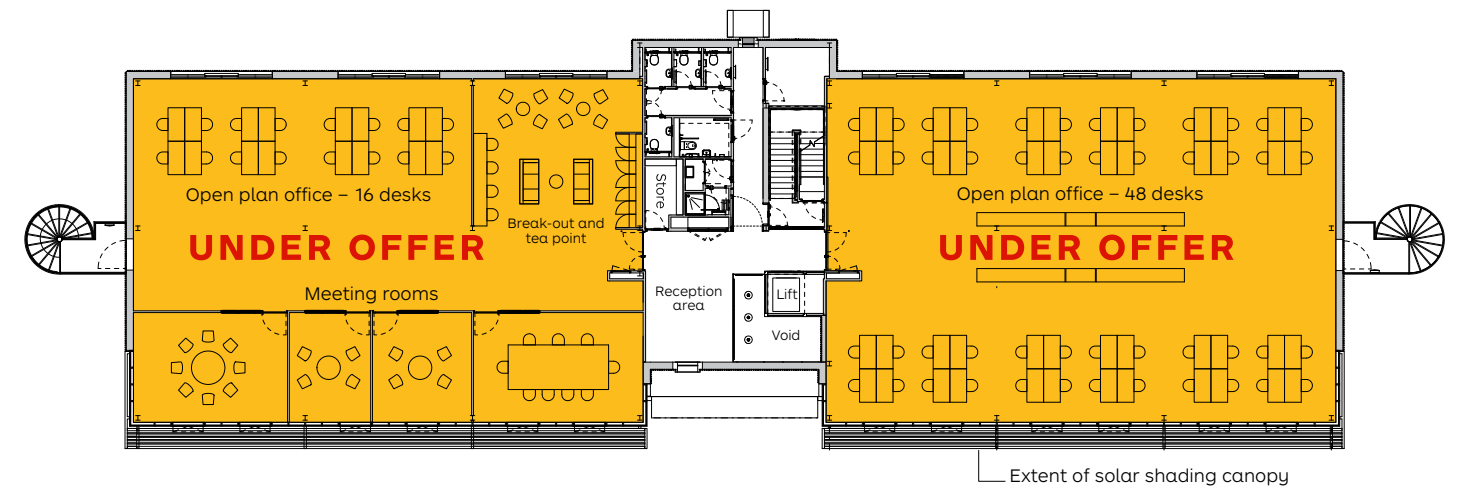
Designed by internationally renowned architects Allford Hall Monaghan Morris, and due for completion in Summer 2018, the building will provide inspiring and flexible office space around well-connected communal areas.

Features include:

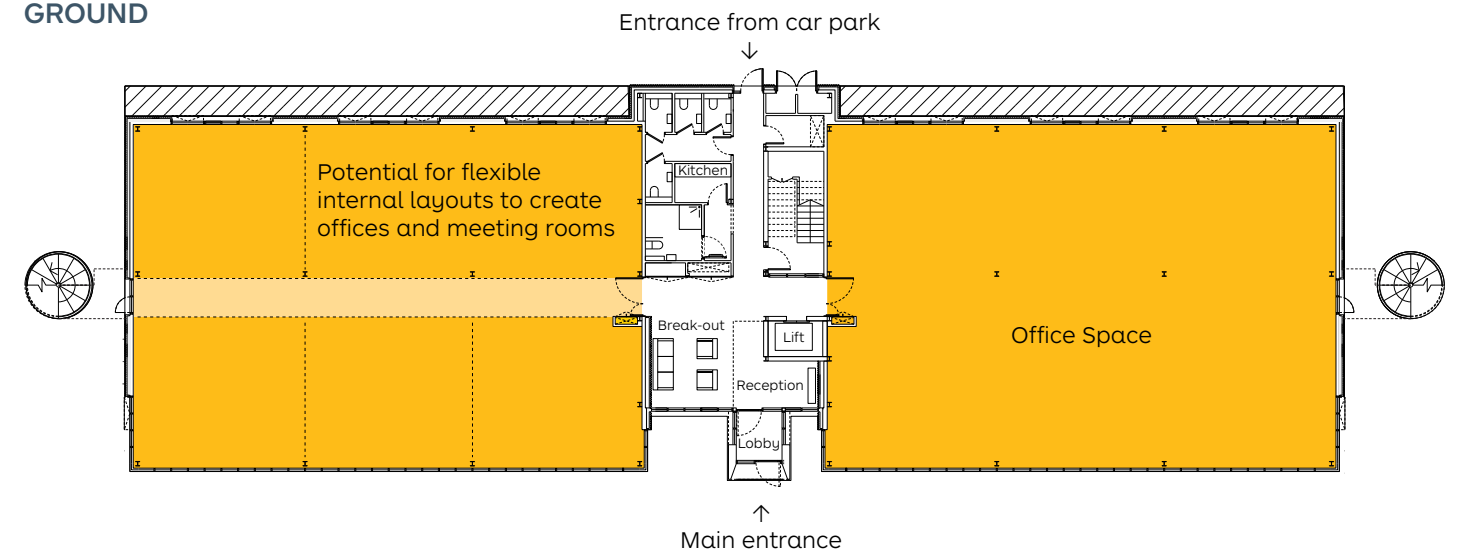
- Flexible office space catering to a variety of business uses and future expansion.
- Large glazed frontages that maximise views and natural light.
- Air conditioned heating and cooling, alongside openable windows
- Break-out space with tea/coffee making facilities.
- WCs and showers.
- Recycling facility points.
- Superfast broadband.
- Car park and covered cycle storage.

Located within the landscaped setting of the tree-lined Boulevard, the building is just a short walk to The Club which provides meeting rooms and event space, a café and gym. Beyond this will lie the centrepiece of the first phase of Alconbury Weald – the refurbished, listed Second World War Watch Office, sitting opposite the cricket pitch.

FIRST



GROUND



Design

With its flexible design, the building can accommodate a range of floor space requirements and has access to shared facilities. Each unit has parking and the building is just a short walk from the Campus' stop on the Busway Route B.

